

FACTSheet #12 Snapshot

February 2018



This latest FACTSheet produced by the Committee for Perth contains a snapshot of key facts relating to the current performance of Perth and Western Australia.

It draws on data from a range of sources including FACTBase reports, Committee for Perth research, government departments and media articles.



THE UNIVERSITY OF
**WESTERN
AUSTRALIA**

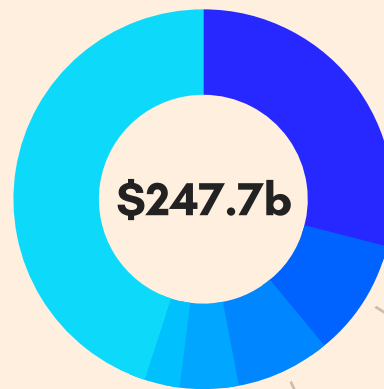
WA ECONOMY: 2016-17

WA's Gross State Product (GSP) was \$247.7 billion, 14% of Australia's GDP.



GSP per capita was \$96,466, 34% above the national average of \$71,971.

Other
45%



Mining
29%

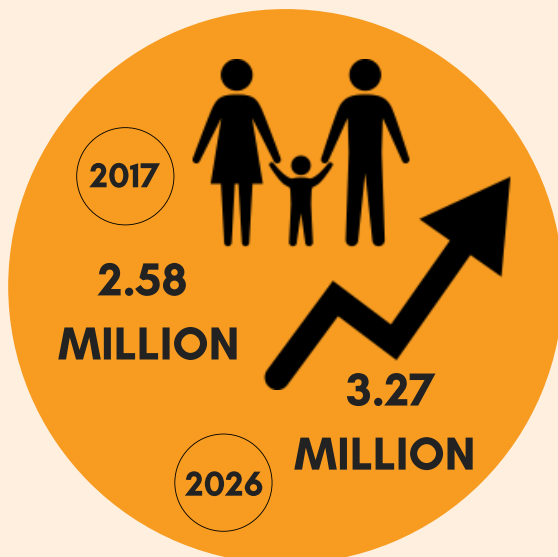
Services
10%

Construction
8%

Manufacturing
5%

Agriculture
3%

WA POPULATION



WA GROWTH 2016-17



Births up 20,024



Net overseas migration
up 13,101



Net interstate migration
down 11,722

WA EMPLOYMENT



Total employment fell by
8,900 in January 2018



Unemployment stabilised
at 5.7%

WA's EXPORTS

WA accounted for **43%** of Australia's
merchandise exports in 2016-17.

1



China
\$60.2b
(50%)

2



Japan
\$15.7b
(13%)

INTERNATIONAL STUDENTS



Enrollments in 2016  10%

PERTH PROPERTY MARKET Q4 2017

Median established house price  1.2%

FOR RENT

Median rent
remained steady
at \$350/week

TOURISM

Visitor spending in 2016-17:



Day Trip - up 9%



International - up 8%



Domestic - down 4%